

Model: Adonis-C2 SR760		Date: 28-Jun-01	No.: MB352001
Modified Article: Caster		Prepared by: E. Fukuyama	
From: Technical Services Dept., GTS Division			
Reason for Modification:	<input checked="" type="checkbox"/> Parts catalog correction <input type="checkbox"/> To facilitate assembly <input type="checkbox"/> Part standardization	<input type="checkbox"/> Vendor change <input type="checkbox"/> To improve reliability <input type="checkbox"/> Other	<input type="checkbox"/> To meet standards (     )

The following should be corrected. Please correct your parts catalog.

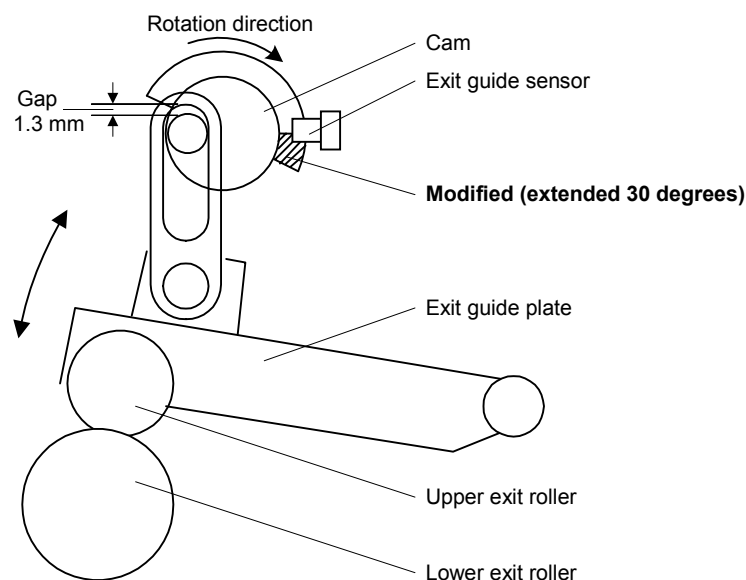
Old part number	New part number	Description	Q'ty	Page	Index
B3521130	G5651140	Caster	1-2	21	6

Model: Adonis-C2 SR760		Date: 30-Aug-01	No.: MB352002
Modified Article: Cam - Paper Exit Unit		Prepared by: E. Fukuyama	
From: Technical Services Dept., GTS Division			
Reason for Modification:	<input type="checkbox"/> Parts catalog correction <input type="checkbox"/> To facilitate assembly <input type="checkbox"/> Part standardization	<input type="checkbox"/> Vendor change <input checked="" type="checkbox"/> To improve reliability <input type="checkbox"/> Other	<input type="checkbox"/> To meet standards ( )

When the Paper Exit Unit cam returns to its home position, there is normally a gap of 1.3 mm between the cam pin and the top of the Driven Roller Link, as shown below. However this gap can close if the cam runs past home position, which can lift the link further and change the position of the Exit Guide Plate.

This decreases the Exit Roller pressure, which can lead to paper jams and/or paper skew. To ensure that the Exit Guide Plate is always stopped at the proper position, the length of the cam's sensor cover has been increased to make the cam stop earlier.

Old part number	New part number	Description	Q'ty	Page	Index
B3523175	B3523176	Left Guide Plate - Middle	1-1	35	4



Model: Adonis-C2 SR760

Date: 30-Aug-01

No.: MB352002

**RCL (Japan) Production**

Model Name	V/Hz	Destination	Code	Serial Number
SR 760	115V/50 Hz 230V/60 Hz	USA, Canada, Europe, Asia	B352-14	L0831060501
	115V/50 Hz 230V/60 Hz	USA, Canada, Europe, Asia, Taiwan, China, etc	B352-17	H7710601503
	230V/60 Hz	Europe	B352-26	4J10710001

Model: Adonis-C2 SR760		Date: 30-Aug-01	No.: MB352003
Modified Article: Base-Lower Tray and Side Plates		Prepared by: E. Fukuyama	
From: Technical Services Dept., GTS Division			
Reason for Modification:	<input type="checkbox"/> Parts catalog correction <input type="checkbox"/> To facilitate assembly <input type="checkbox"/> Part standardization	<input type="checkbox"/> Vendor change <input checked="" type="checkbox"/> To improve reliability <input type="checkbox"/> Other	<input type="checkbox"/> To meet standards (      )

Although the loading capacity of the Lower Tray is 750 sheets according to the specifications, there are cases where customers load up to 1500 sheets into the tray, causing the Side Plate to deform from stress. When the Upper Tray is then selected in this condition, the Lower Tray's Side Plate catches on the overflow sensor, damaging the sensor.

To ensure that the Side Plate does not deform even under such conditions, the following parts have been further strengthened.

Old part number	New part number	Description	Q'ty	Int	Page	Index
B3523810	B3523812	Side Plate – Lower Front	1-1	O/O	33	13
B3523820	B3523822	Side Plate – Lower Tray	1-1	O/O	33	16
B3523831	B3523830	Base – Lower Tray	1-1	O/O	33	18

## RCL (Japan) Production

Model Name	V/Hz	Destination	Code	Serial Number
SR 760	115V/50 Hz 230V/60 Hz	USA, Canada, Europe, Asia, Taiwan, China, etc	B352-14	L0831080120
	115V/50 Hz 230V/60 Hz	USA, Canada, Europe, Asia, Taiwan, China, etc	B352-17	H7710800001
	230V/60 Hz	Europe	B352-26	4H10810001

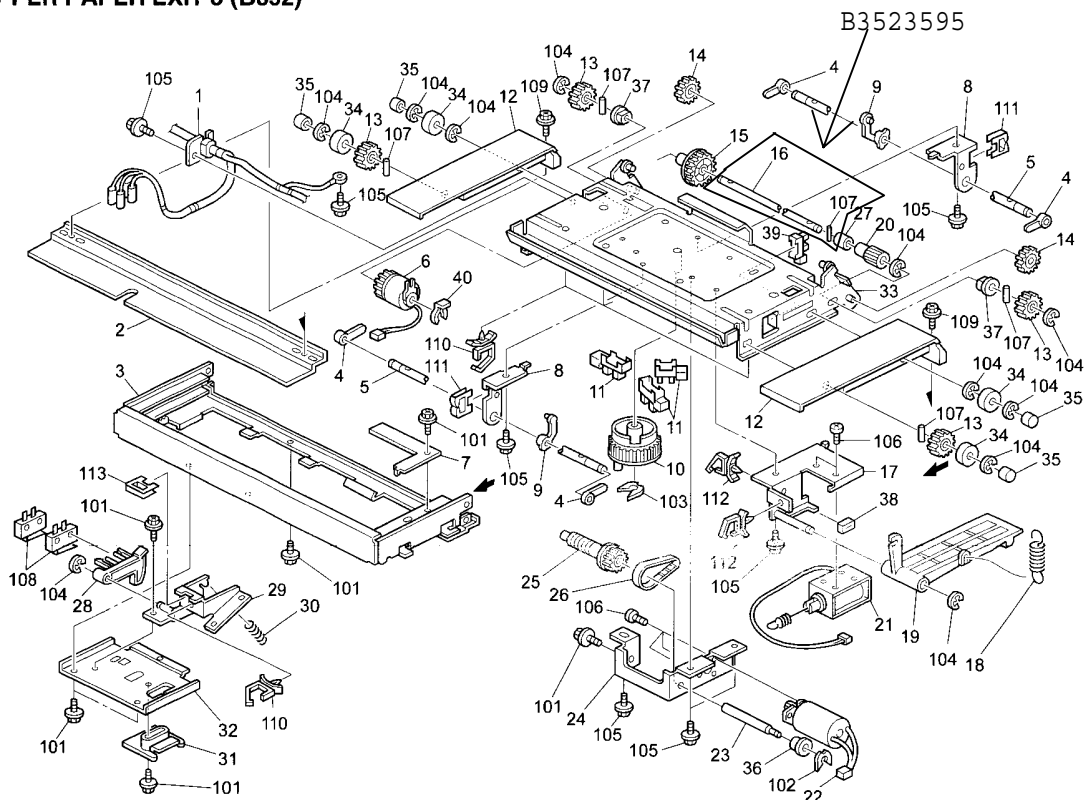
Model: Adonis-C2 SR760		Date: 05-Oct-01	No.: MB352004
Modified Article: Rear Shaft - Upper Tray		Prepared by: E. Fukuyama	
From: Technical Services Dept., GTS Division			
Reason for Modification:	<input type="checkbox"/> Parts catalog correction <input checked="" type="checkbox"/> To facilitate assembly <input type="checkbox"/> Part standardization	<input type="checkbox"/> Vendor change <input type="checkbox"/> To improve reliability <input type="checkbox"/> Other	<input type="checkbox"/> To meet standards (      )

To facilitate factory assembly of the Rear Shaft (Torque Limiter), the diameter of its Parallel Pin has been expanded. This will ensure a more solid fit and prevent the pin from falling out. As a result, the new Rear Shaft in the table below includes the Parallel Pin.

**Note:** The Parallel Pin is still used as an independent service part in the other sections of the machine, and has only been changed/combined in this one area (see the illustration below).

Old part number	New part number	Description	Q'ty	Int	Page	Index	Note
B3523590	B3523595	Rear Shaft – Upper Tray	1-1	X/O	29	16	

## 12. UPPER PAPER EXIT 3 (B352)



Model: Adonis-C2 SR760		Date: 05-Dec-01	No.: MB352005
Modified Article: Parts Catalog Correction		Prepared by: S. Tomoe	
From: Technical Services Dept., GTS Division			
Reason for Modification:	<input checked="" type="checkbox"/> Parts catalog correction	<input type="checkbox"/> Vendor change	<input type="checkbox"/> To meet standards ( )
	<input type="checkbox"/> To facilitate assembly	<input type="checkbox"/> To improve reliability	
	<input type="checkbox"/> Part standardization	<input type="checkbox"/> Other	

Please apply the following P/N corrections to your Parts Catalogs:

Old part number	New part number	Description	Q'ty	Int	Page	Index	Note
B3525500	B3525520	Main Control Board	1-1		39	1	
50530447	G8003089	Bushing – 6mm	1-1		11	20	
B3522220	G5652221	Stay - Guide Holder	1-1		17	19	Fig 1
	G5652222	Mylar – Guide Holder	0-6		17	39	Fig 1

